

Fig. 1 – Layout of the studied sites (name of site in rectangle) and shot points (full black stars with name of shot) on the background of a geographic map. Shot points U and W are out of map on the seismic line direction about 41 km and 88 km, respectively, to the west of shot T.

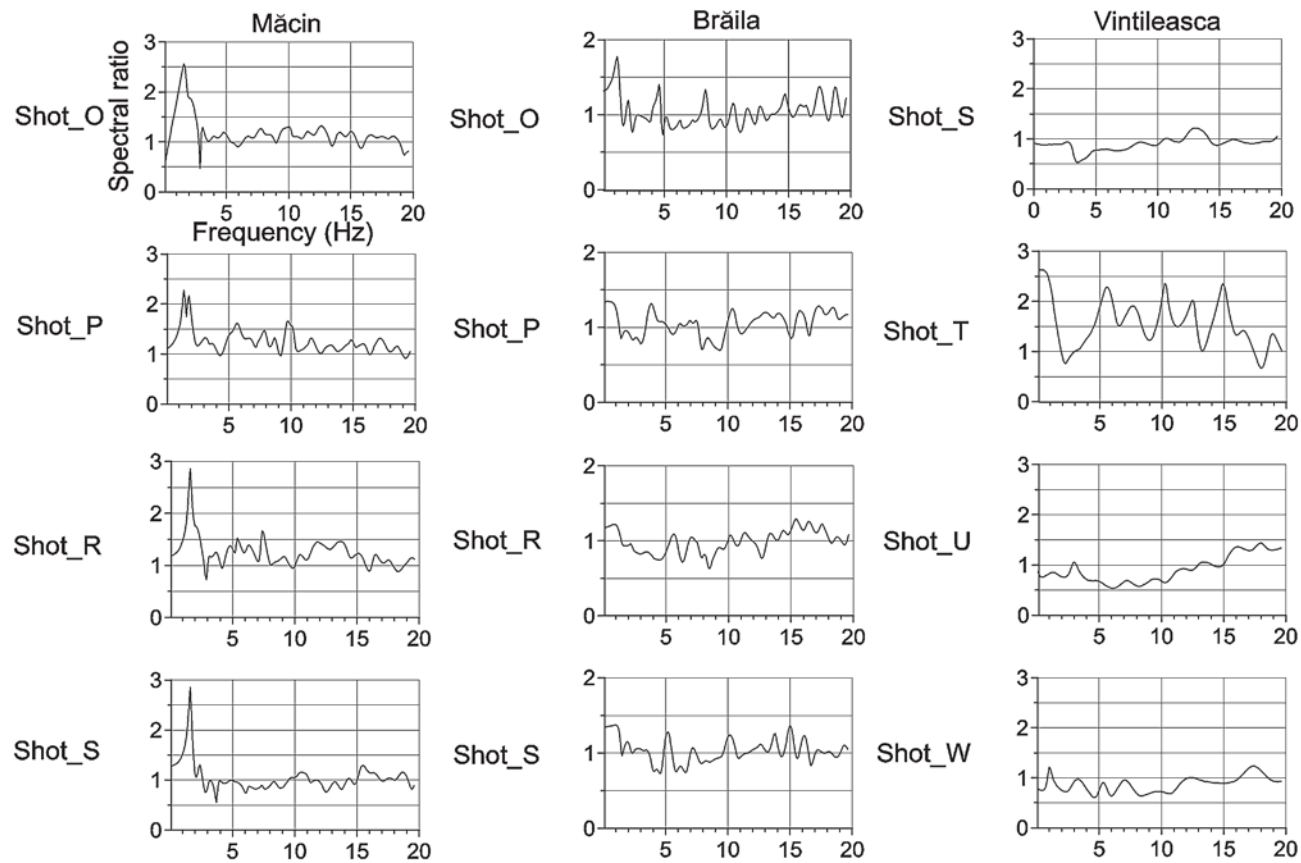


Fig. 2 – Spectral ratio curves derived from seismic records generated by four shots for each site: Vintileasca, Brăila and Măcin. Some common features for the same site can be noticed but different shots for the Măcin and Brăila sites in the frequency range 0.1–5 Hz. The proximity of shot T from the Vintileasca site generates large amplification beyond of 5 Hz while for the farther shots the amplifications are no longer significant.

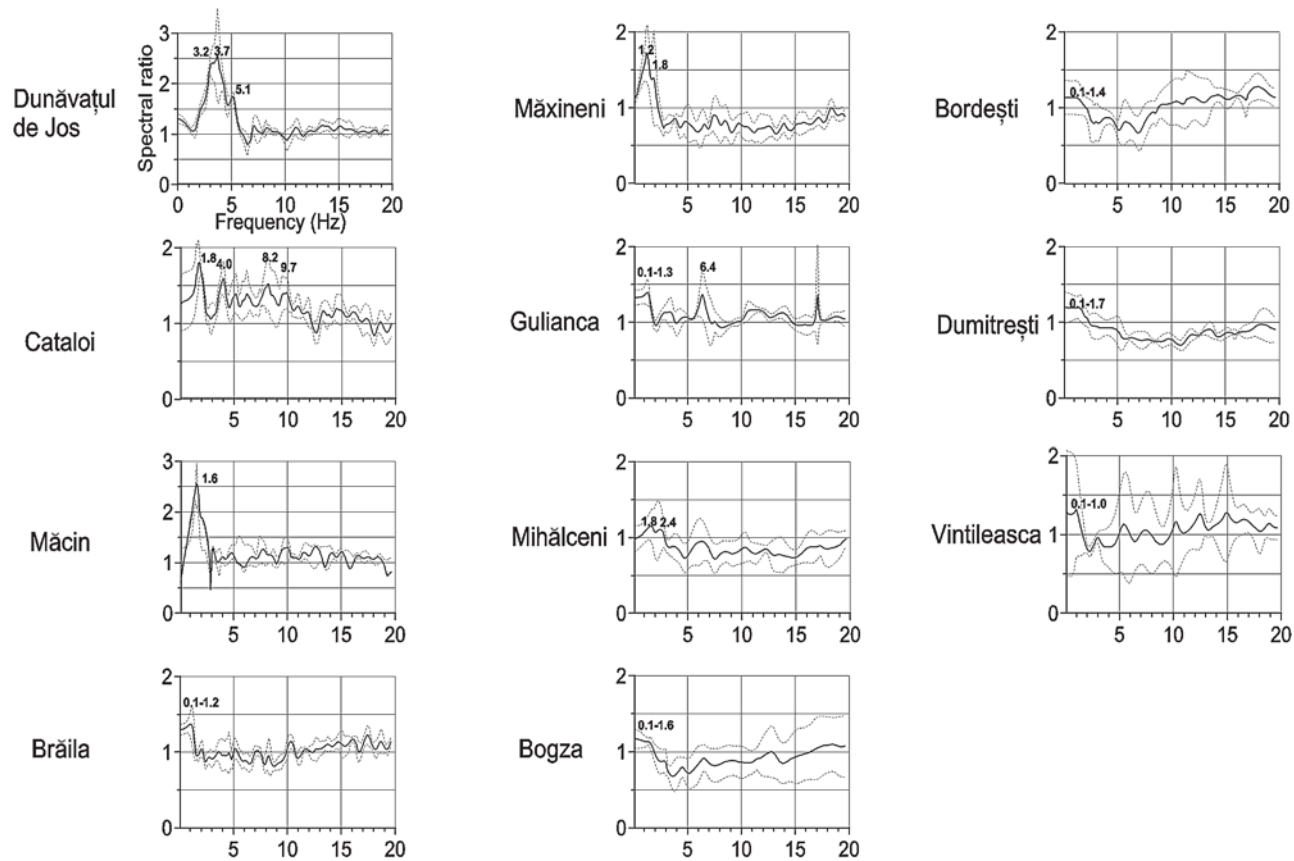


Fig. 3 – Mean spectral ratio curves (thick line) for the eleven sites as an average of the four shots. Dashed lines stand for a plus/minus standard deviation. Frequencies where peaks are placed are marked by decimal numbers. Notice three sites where high peaks are well defined in the frequency range 0.1–5 Hz: Dunăvațul de Jos, Măcin, Măxineni. For other sites some amplifications < 1.5 units are present only from 0.1 Hz to 2 Hz: Brăila, Gulanca, Bogza, Bordești, Dumitrești and Vintileasca.